

Charis-4 Double storey design *Narrow block - Great investment*



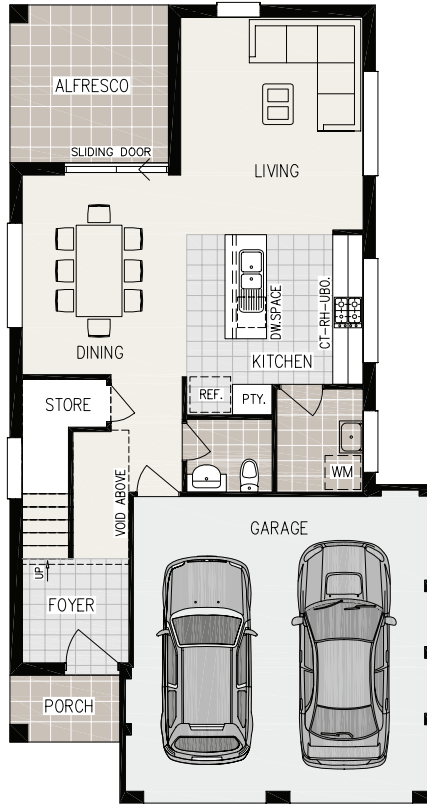
Home Features

Inclusions – 4 bedrooms, en-suite, walk-in wardrobe to master bedroom, activity room, open plan kitchen, living & dining area, alfresco area and double garage. Optional study/single garage configuration available.

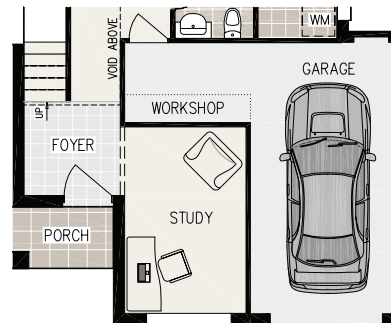
Home Dimensions

8390mm wide x 15710mm deep

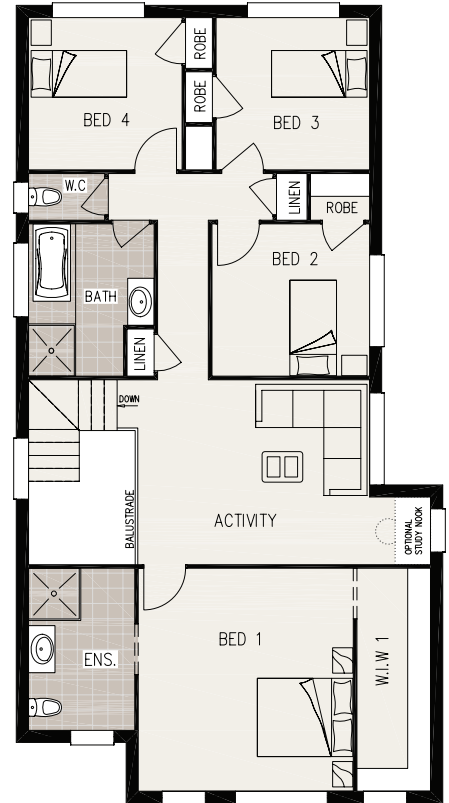
Bedroom 1	4230 x 4390
Bedroom 2	3100 x 3000
Bedroom 3	3020 x 3000
Bedroom 4	3020 x 3000
Activity	5810 x 3640
Dining	3120 x 3930
Living	3590 x 4190
Alfresco	3120 x 3110
Garage	6010 x 5800



Ground Floor



Optional Study / Single Garage



First Floor



Mode Facade



Classic Facade



Contempo Facade